



# MONTHLY MEMBERSHIP PROGRESS REPORT

District 19 I

Results as of: 5/31/2014

GMT: Andre Nimchuk

LOCATION WASHINGTON

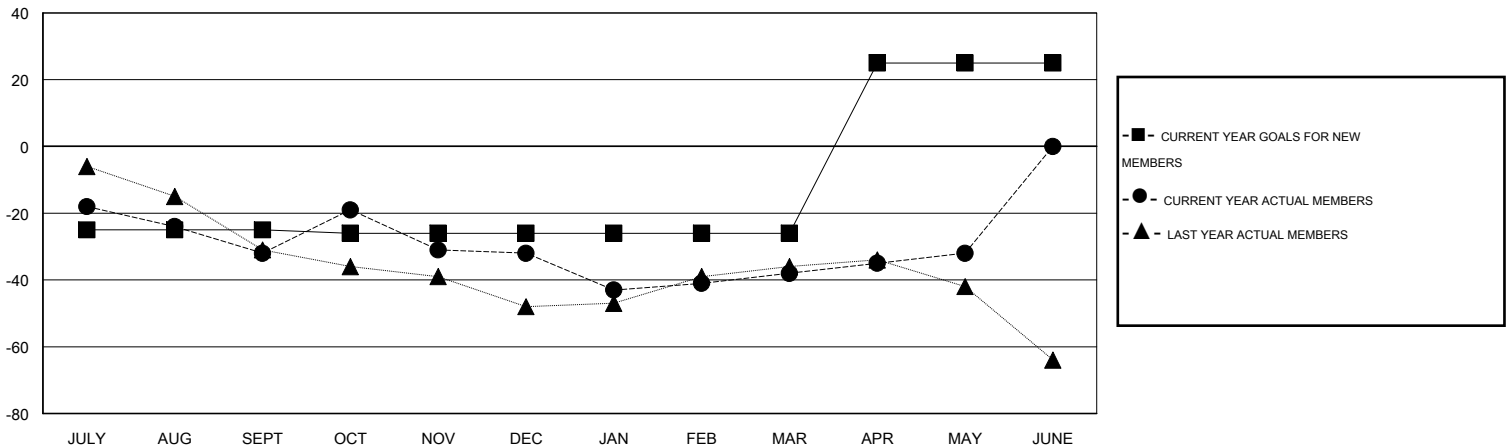
GMT CA 2

Clubs					Members				
RESULTS FOR 2013-2014					RESULTS FOR 2013-2014				
QUARTER	NEW CLUB GOAL	ACTUAL NEW CLUBS	ACTUAL DROPPED CLUBS	ACTUAL NET GAIN/LOSS	QUARTER	NEW MEMBER GOAL	ACTUAL TOTAL MEMBERS ADDED	ACTUAL DROPPED MEMBERS	ACTUAL NET GAIN/LOSS
JULY/AUG/SEPT	0	0	0	0	JULY/AUG/SEPT	-25	25	57	-32
OCT/NOV/DEC	0	0	0	0	OCT/NOV/DEC	-1	34	34	0
JAN/FEB/MAR	0	0	0	0	JAN/FEB/MAR	0	30	36	-6
APR/MAY/JUNE	1	0	0	0	APR/MAY/JUNE	51	25	19	6

GOALS AND ACTUAL NEW CLUBS CUMULATIVE



GOALS AND ACTUAL MEMBERS CUMULATIVE



DROPPED CLUBS: 0	32 CLUBS OF 52 ADDED 1 OR MORE NEW MEMBERS	<u>GENDER DISTRIBUTION</u>	
<u>DROPPED MEMBERS</u>		MALE	875 (69.61%)
DECEASED	24	FEMALE	382 (30.39%)
CLUB CANCELLED	0	<u>FAMILY UNIT MEMBERS</u> 201	
OTHER	122	<u>HEAD OF HOUSEHOLD</u> 99	
<b>TOTAL</b>	<b>146</b>	<u>NON-HEAD OF HOUSEHOLD</u> 102	

[CLICK HERE FOR HEALTH ASSESSMENT DATA](#)